

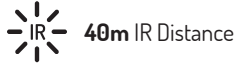
MAIN FEATURES



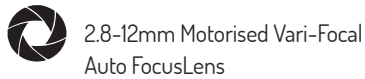
2MP



Full HD 1080P



40m IR Distance



2.8-12mm Motorised Vari-Focal Auto Focus Lens



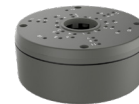
IP68



12v DC



ACCESSORIES



SRJ1/G

MODEL	SRBN2VFG
Camera Chipset	Hi3516CV300
Image Sensor	Sensor IMX323, 1/2.9" Progressive CMOS
Resolution	2MP 1920(H)×1080(V)
Min. Illumination	Color 0.1lux @ F1.2(AGC ON); B/W 0 lux @ IR ON
Shutter	1/5 ~ 1/20000s
Slow shutter	Support
Lens	2.8 ~ 12 (Motorized) mm H.FOV: 104 ~ 31°
F No.	F 1.6 ~ 2.9 ±5%
Day & Night	IR cut filter with auto switch
WDR	Digital WDR
Video Compression	H.265/H.264
Video bit rate	8Kbps ~ 8Mbps
Triple Stream	YES
Frame Rate	Mainstream (1-30fps optional): 1920x1080, 1280x960, 1280x720 Substream: 1280x720, 640x480, 320x240 Mobilestream: 640x480, 320x240
Image Settings	Rotate mode, Saturation, Brightness, Contrast, Hue, Sharpness adjustable
BLC	Support
ROI	Support
Privacy Mask	Support
Video Analytics	Perimeter Intrusion Detection, Line Crossing Detection, Stationary Object Detection.
Protocols	TCP/IP, HTTP, DHCP, DNS, DDNS, RTP/RTSP, PPPoE, SMTP, NTP, UPnP, SNMP, HTTPS, FTP
System Compatibility	ONVIF(Ver 2.6)
Interface	RJ45 10M / 100M Ethernet interface x1
Led	40pcs(SMD)
IR Range	Up to 40m
SD storage	YES
Alarm Trigger	YES
Audio	YES
Video Output	YES
Reset Button	YES
PoE	YES
Water Proof	IP 66
Power Supply	DC 12V/POE
Consumption	≤ 7W
Dimension	Ø84 X 241mm
Weight	appr. 805g
Storage Temperature	-30~+60°C
Operating Temperature	-30~+55°C

* Specifications subject to change without further notice