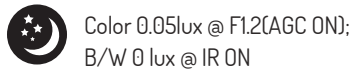
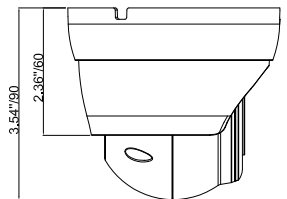
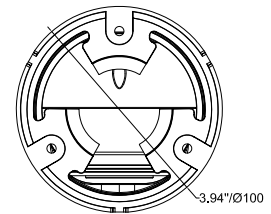
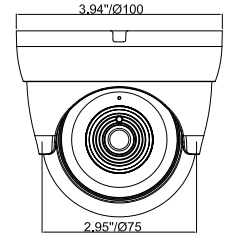


MAIN FEATURES



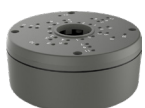
Night Light



MODEL	SRDN2FG
Image Sensor	Sensor IMX323, 1/2.9" Progressive CMOS
Resolution	1920(H) x 1080(V)
Min. Illumination	Color 0.1lux @ F1.2(AGC ON); B/W 0 lux @ IR ON
Shutter	1/5 ~ 1/20000s
Slow shutter	Support
Lens	2.8 mm H.FOV: 101°
F No.	F 2.0 ±5%
Day & Night	IR cut filter with auto switch
WDR	Digital WDR
Video Compression	H.265/H.264
Video bit rate	8Kbps ~ 8Mbps
Triple Stream	YES
Frame Rate	Mainstream (1-30fps optional): 1920x1080, 1280x960, 1280x720 Substream: 1280x720, 640x480, 320x240 Mobilestream: 640x480, 320x240
Image Settings	Rotate mode, Saturation, Brightness, Contrast, Hue, Sharpness adjustable
BLC	Support
ROI	Support
Privacy Mask	Support
Video Analytics	Perimeter Intrusion Detection, Line Crossing Detection, Stationary Object Detection.
Protocols	TCP/IP, HTTP, DHCP, DNS, DDNS, RTP/RTSP, PPPoE, SMTP, NTP, UPnP, SNMP, HTTPS, FTP
System Compatibility	ONVIF(Ver 2.6)
Interface	RJ45 10M / 100M Ethernet interface x1
Led	18pcs(SMD)
IR Range	Up to 30m
PoE	YES
Water Proof	IP 66
Power Supply	DC 12V/POE
Consumption	≤ 7W
Dimension	Ø90 X 85mm
Weight	appr. 378g
Storage Temperature	-30~+60°C
Operating Temperature	-30~+60°C
Consumption	≤ 7W

* Specifications subject to change without further notice

ACCESSORIES



SRJ1/G



SRWI/G