

## MAIN FEATURES



2MP



Full HD 1080P



40m IR Distance



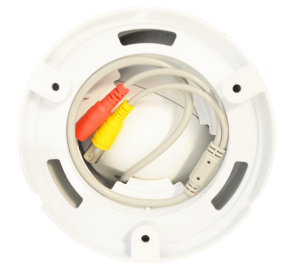
2.8-12mm Vari-Focal Lens



IP66



12v DC



Built-in Base

MODEL	SRDT2VFG
Image Sensor	2 Megapixel, GC2033, 1/2.7" CMOS
Resolution	1920(H) x 1080(V)
Viewing Angle (Degrees)	D: 137.04° (W) - 34.1° (T) H: 113.54° (W) - 29.76° (T) V: 59.3° (W) - 16.76° (T)
Video Frame Rate	1080p 30FPS (NTSC) 1080p 25FPS (PAL)
Lens (mm)	2.8-12mm
Vari-Focal Lens Range (mm)	2.8-12mm
Mechanical Zoom	Manual 2.8-12mm zoom
F-number	F1.6(W) - F3.3(T) ±5%
Cable Managed Stand (Yes/No)	Yes
AGC	1~15 Optional
Video Output Termination	1-Channel BNC video output
IR Cut Filter	YES, 850nm
Audio - Microphone (Yes/No)	NO
IR LED Qty	40pcs SMD LED
Night Vision (Metres)	40m
IR Cut Filter	Support
Backlight Compensation	N/A
Ingress Protection	IP66
Operating Power (Volts and Amps)	MAX 12Vx0.39A @4.68W
Operating Temperature	-30°~+55°
Dimension	135.4mmx127.7mm(L)

\* Specifications subject to change without further notice

